

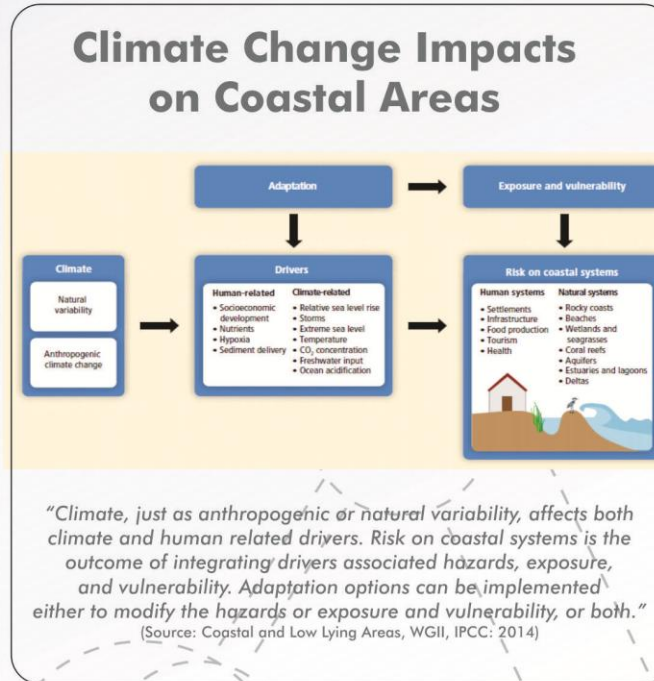
ABOUT CORECT

Corect is a research group comprised of marine scientists and coastal community empowerment practitioners from Brawijaya University, Malang.

Our works is dedicated to strengthening the research database and activities includes the implementation of science and technology to improve coastal habitats and communities resiliency, formulate the adaptation strategy to the impacts of climate change in coastal areas, particularly in tropical region.

Examples of expected research outcomes include:

- (1) Improving databases of coastal habitats and timely delivery of accurate environmental monitoring ,
- (2) Initiate partnership with the local governments, universities and stakeholders in the development of better strategy of coastal habitat and community resiliency,
- (3) Give trainings and education to the students, practitioners and local communities of coastal climate change impacts and adaptation strategy



Profile | Research group of Brawijaya University, Malang, Indonesia



CoReCT-RG
Coastal Resilience and Climate Change
Adaptation - Research Group

PIC CONTACT:
BAMBANG SEMEDI, Ph.D.
Room 501, Main Building of FPIK
Brawijaya University,
Jl. Veteran, Malang, East Java, Indonesia
PHONE (MOBILE): +62-812-3287-1020
FAX: +62-341-557-8537
EMAIL: bambangedi@ub.ac.id

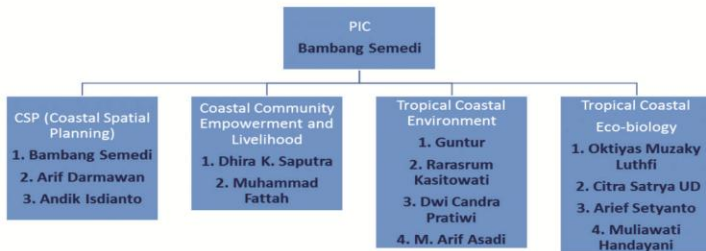


COASTAL RESILIENCE AND CLIMATE CHANGE ADAPTATION



COASTAL RESILIENCE AND CLIMATE CHANGE ADAPTATION

OUR TEAM



VISION

Being a world class research group in the tropical coastal resources management to improve coastal community and ecosystem resilience facing the global Climate Change

MISSION

The research group focused on two major studies:
 (1) Strengthening database of coastal environment, spatial and eco-biology for sustainable coastal management
 (2) Strengthening the resilience of the coastal habitat and coastal community adaptation to the impacts of climate change

GOALS

(1) Applying science and technology to strengthen the coastal environment, spatial and eco-biology for sustainable coastal management
 (2) Set up programs to improve the resilience of the coastal habitat and coastal community adaptation to the impacts of climate change



LABS AND FACILITIES

Marine Exploration Laboratory,
 Faculty of Fisheries and Marine Science,
 Brawijaya University
 (supporting facilities for marine ecology, ocednography and acoustic surveys)

Fisheries Biotechnology Laboratory,
 Faculty of Fisheries and Marine Science,
 Brawijaya University
 (supporting facilities for biotech analysis)

All supported Laboratories
 Brawijaya University, Malang

CoReCT-RG

Coastal Resilience and Climate Change Adaptation - Research Group

PIC CONTACT:

BAMBANG SEMEDI, Ph.D
 Room 501, Main Building of FPIK
 Brawijaya University.
 Jl. Veteran, Malang, East Java, Indonesia
 PHONE (MOBILE): (+62) 812-3287-1020
 FAX : (+62) 341-557-837
 EMAIL: bambangsemedi@ub.ac.id

WORK AND CAPABILITIES

